

Newsletter

December, 2020

GFWC Zwaanendael Women's Club

www.gfwcZwaanendael.org

ZClubLewes@gmail.com



A member of the General Federation of Women's Clubs



"Now more than ever we must be strong in our conviction to serve our community."

-Vickie Burrier, Z Club President

Join Us For Zoom Happy Hour

*Tuesday, December 15
4:00 pm*



*Zoom log in details were emailed to you on
Thursday, December 10*



Lighthouse for Broken Wings / Sheltering Hearts

Founder Toni Short will again be sheltering the homeless beginning Tuesday, December 15.

Looking for Lunch Ladies

I'm again asking you to volunteer to make lunches for the homeless. Last winter when I appealed to you the response was overwhelming. The Covid-19 pandemic has made the need more dire this year and many more families and individuals are applying for shelter.

My sincere appreciation for all your help. God bless....

Adrienne

.....

- The homeless will be housed at the American Inn, 36012 Airport Road, Rehoboth Beach.
- For those not comfortable entering the hotel lobby you can place the food in your trunk and it will be removed by a masked volunteer.
- If you are unable to deliver the lunches we can arrange to pick up from you.
- If you are unable to prepare lunches but would still like to assist in this effort you can donate towards the cost of lunches.

.....

Contact Adrienne Ponzini to schedule a lunch day, to donate towards lunches, or with any questions.

302-645-2383 - Delbeachouse@aol. com



Health and Wellness
Harbor Healthcare & Rehabilitation Auxiliary
Assisting In-need Residents

Suggested Donations

FOR MEN

- NON-SKID SOCKS
- BODY WASH & BODY LOTION
- ATHLETIC SOCKS
- LIGHT WEIGHT SWEAT PANTS AND TOPS, L & XL

- LARGE PRINT WORD FIND BOOKS
- LARGE PRINT CROSSWORD PUZZLES
- MAGNIFYING GLASSES
- ADULT COLORING BOOKS
- COLORED PENCIL SETS
- GLUE STICKS

FOR WOMEN

- NON-SKID SOCKS
- BODY WASH & BODY LOTION
- NIGHT GOWNS & PAJAMAS
Size Large and X-Large
- ADJUSTABLE SLIPPERS
Size 9, approximate
- LIGHT WEIGHT SWEAT PANTS AND TOPS, L & XL
- UNDERSHIRTS /TANKS T-SHIRTS
- HAIR SCRUNCHIES,
HEADBANDS, HAIR TIES.

NAIL POLISH - NAIL POLISH REMOVER - COTTON BALLS

The Aides Are Doing Nails For The Ladies

LAP
BLANKETS

We are again collecting items for the residents of Harbor Healthcare.

We would like to have any gifts by Dec. 14th

Drop Off Your Donations to Terry Yates, 17277 Venables Drive, Senators
Neighborhood

To Have Your Donations Picked Up, Call Judy Pagani at 302-253-8546

Please Leave Gifts Unwrapped - Thank you for your Support!



History Corner

Nancy H. Phillips, Club Historian

1929-1921

President Lillie Atkins

On December 1921, a business district fire destroyed the west side of Second Street. The fire damages properties on the opposite side of the street as well.

The club had 34 members at this time. New member fees were raised to \$1.50. The club celebrated its 15th anniversary in the Bingham House. The club was recognized with luncheons and teas throughout the state.

A new trend followed WW I with people showing more patriotism. Programs at the club meetings were held to educate members on flag etiquette. Members held suppers to support the local firemen; Funds that were raised bought rubber coats for the firemen.



Club historian Nancy Phillips researching in the Z Club collection.

The Z Club Collection at the Lewes Historical Society

Housed at the Margaret Rollins Community Center is the Z Club collection containing our club's history.

The collection is currently comprised of 25 archival boxes containing artifacts; 7 ring binders containing club history from 1905 to present day; and 15 scrapbooks.

Thanks to our club historians, this collection is updated regularly.

Environment

Mary Kosowski, Committee Chair



Members working with me on the environment committee are Sue Crawford, Cindy DeMedio, Kathy Herman and Mary Yonych. New members to this committee are welcome and can join by contacting me at marytkosowski@yahoo.com.

The group met by Zoom in November and discussed potential projects. We will meet again in mid-December to discuss the results of our research on projects that can be done in these challenging COVID times.

Look for information on these findings in the January newsletter.

I have included information about Green Gifting and the Plastic Bag Ban at the end of the newsletter.

Mary

REMINDER: The plastic bag ban begins on January 1



Q: When does the plastic carryout bag ban start?

A: The Delaware General Assembly passed this law in 2019. The ban goes into effect Jan. 1, 2021.

Complete FAQs are on page 16 & 17 of this newsletter.



Check Presentation: (l-r) Lynn Barberi Z Club Vice President; Friends of Lewes Library President Candace Vessella and Treasurer William Oliva.

◆
*Just a few
of the
Community
Organizations
Z Club
Supports*
◆



Check Presentation: (l-r) Lynn Barberi Z Club Vice President; Michelle Clouser, Administrator, Home of the Brave 2, Women's Facility.



Check Presentation: (l-r) James Abbott , Executive Director Lewes Historical Society and Vickie Burrier, Z Club President.



Donations collected for USO Dover canteen. All canteen items provided to service members at no charge.



Delivery of Items collected from Z Club members and Nassau Grove and Reddenwood neighborhood partners for Delaware Adolescent Program, Inc (DAPI.) (l-r) Cindy Winkler, Z Club, and Kim Wright Director, DAPI Sussex County Facility.



Check Presentation: (l-r) Vickie Burrier, Z Club President and Jackie Sullivan, Village Volunteers President.



Check Presentation: (l-r) Lewes Fire Department President Craig Stephens; Vickie Burrier, Z club President; Career EMT Ben Eskridge; EMS Chief Pam McClanahan.



Check Presentation: (l-r) Lynn Barberi Z Club Vice President, and Chad Robinson, Community Relations Director, Food Bank of Delaware.



Check Presentation: (l-r) Vickie Burrier, Z Club President; What is Your Voice Vice President Walter Sterbach and Founder and President Jacqueline Sterbach.



Delivery of over 70 lbs. of donated items: (l-r) Kathy Ruth, Z Club, and Judy Travis, Stockings for Soldiers Delaware Founder. Club members donated additional items that were shipped direct from Amazon.



Delivery of collected items: \$500 in gift cards, 85 toys for children, and 54 gifts for children to "shop" for their moms. (l-r) Lisa Swartdzentruber, What is Your Voice staff, and Gary Maratta, Z Club volunteer.

What is Your Voice



Thank You! to everyone who donated to our What is Your Voice toy drive.

We provided Christmas toys and gift cards for the 85 children in the program. Last week we delivered:

- 85 toys
- 5 / \$20 Amazon gift cards
- 3 / \$50 Amazon gift cards
- 12 / \$25 Amazon gift cards
- A \$100 member donation check
- 54 gifts for the children to choose from to give to their moms



(l-r) Lisa Swartzentruber, WIYV Staff; and Gary Maratta, Vickie Burrier's husband and volunteer extraordinaire.

November Zoom Meeting Recording

For anyone wishing to view the November meeting, the Zoom link and password is located in the Members Area of the Z Club website.

Santa and the Jingle

I thought I heard a jingle, but could not be quite sure
A jingle in this jangled world would have its own allure
The jingle of isolation with many having been self-kept
Smothering other sounds for which we all have wept
The sounds of children playing as they giggle, race and run
Dashing through the raindrops or building castles in the sun
A jingle in this jangle could be a Santa sound of hope
As nothing can ever keep him from any slippery slope
He must be in the geriatric stage like me and all my friends
With aches and pains in all the different places that he bends
"There it is again," I thought as I listened with such glee
A jingle in the jangle of all the risks surrounding me
The risk of going out to lunch or anywhere at all
The risk of meeting friends or simply shopping at the mall
The risk of traveling to see folks who are no longer living here
Or having Christmas dinner with those whom we hold so dear
Yes, a jingle in the jangle of the lies told by evening press
Perhaps would light a spark for us to smile, or laugh I guess
I'd like to think the jingle that perhaps I really hear
Simply is pre-announcing a fellow of great cheer
A fellow who has shown such courage because he is so bold
To leave his comfy home in Nome where it's mighty cold
And travel miles and miles at night with a sleigh so full of gifts
Over hills and valleys, deserts and deep drifts
Depending on his reindeer to lift him up so high
That angels kiss their noses as they go dashing by
I know the jingle that I heard in this jangle of my life
Is one that I can depend on to counteract the strife
Covid being as it is, coupled with riots and other fray
Cannot stop the jingle or the blessings of Christmas day
No matter how old you are, believe that Santa is truly real
Even Facebook pictured him where we saw him kneel
In front of a manger over which there was a star
That wisemen followed years ago on their journey from afar
The baby in the manger Santa held in his gnarled hands
Was still too tiny to convey his love to all the lands
He gazed at the old man in the battered suit of darkest red
And gave him his blessing to share gifts of love instead
Even when the Christ child grew with his father's care above
He never interfered with Saint Nicholas's or his form of love
That's how Santa got his start and I would like to think it's true
So, I decided on this day to share my thoughts with you

Maxine McWhorter Ungerbuehler
Christmas poem of 2020



Greetings From
Maxine McWhorter Ungerbuehler

It is with my sincerest best wishes
for all of you to have blessings
during this wonderful season even
though we are all experiencing a
very different 2020.

Love, Maxine





*Members Baked and
frosted 300 Cookies
for Shepherd's Office's
Thanksgiving Dinner
for the Homeless,
Hungry, or Lonely.*



Kathy Cochran (l) and Laurie
Whittenberger(r) decorating leaf cookies.



Health and Wellness



CHHS Clothing Closet

Although we were not able to hold a fall clothing distribution event, I am continuing to collect clothing for the Cape Henlopen High School clothing closet. I am being more particular these days as my storage space is limited but let me know if you have any donations. I hope we will be able to distribute clothing in the spring.

Thank you,

Cindy

Cwinkler21@gmail.com

Spring Yard Sale

Because of the success of the fall yard sale we will participate again in the spring so please save your unwanted treasures for us.



There Are Volunteer Opportunities That Can Fit Every Member's Interests and Needs.

All Z Club members are encouraged to contact the Committee Chairs or Program Coordinators listed below to see where assistance may be needed.

Much of the work can be done virtually or in a contact-free fashion.

Contact information for committee chairs can be found in the member directory located in the members area of the website.
gfwcZwaanendael.org.

Have a New Idea?

Contact Vickie Burrier if you have new ideas for ways we can assist our community or raise funds.

COMMUNITY SERVICE PROGRAM (CSP) COMMITTEES	COMMITTEE CHAIR(s) OR PROGRAM COORDINATOR(s)
Arts and Culture (Formerly Arts)	Laura McGrew & Connie Rivette
Civic Engagement and Outreach (Formerly Public Issues)	Kathy Ruth
Domestic Violence and Sexual Assault Prevention and Awareness GFWC Signature Program; Note "Sexual Assault" added to title What Is Your Voice?	Terry Yates & Maureen Keeney
Education and Libraries (Formerly Education) Includes HOBY - Hugh O'Brien Youth Leadership Program	Sue Olkowski
Environment (Formerly Conservation)	Mary Kosowski
Health and Wellness (Formerly Home Life) Health and Wellness – Peoples Place, Group Home for Girls Health and Wellness – Harbor Healthcare Health and Wellness – Harry K Baby Pantry Health and Wellness – Lighthouse for Broken Wings Health and Wellness - Cape Henlopen High School Clothing Closet Health and Wellness – Food Drive	Mary Anne Rocks & Lauren Rose Judy Pagani Cindy Winkler Adrienne Ponzini Cindy Winkler Deb Cebula & Marina Gray
COMMUNITY IMPACT PROGRAM (CIP) 2020-2022 (Formerly Community Improvement Program) Program To be Determined	Open

A cartoon illustration of a smiling tree stump with large, expressive eyes, small arms, and small legs. It is standing on a small patch of ground. The illustration is tilted slightly to the right.

A graphic of a log with the text "Log Your Hours" written on it.

*GIK = Gifts in Kind

Print this form for easy
Hours and
Gifts in-kind
recordkeeping

This form, along with a second version, is always available to print from the members area of the Z club website.

[illegible]

Rev. 1/10/19

Reflections from Rita

News from GFWC DSFWC President Rita Hollada



As I was having breakfast this morning, I noticed a line on the back of the cereal box that read "Life is full of beautiful moments." During this very difficult year of dealing with the pandemic, that sentence made me stop and reflect on all of the wonderful holidays of the past. This holiday season will just be different, but it can still be magical and wonderful! My wish is that you will all find the magic in whatever way you celebrate.

One way to celebrate will be to take the virtual tour of GFWC Headquarters - *our house at 1734 N Street, Washington DC*. The live tour will be conducted by President Marian St.Clair on Wednesday evening, December 16 from 8-9 PM. It is exciting that so many who have never been able to travel to Washington will be able to see the house and all of the beautiful holiday decorations. Keep a sharp eye out for the two ornaments that we sent for the trees. **Please note the registration for this event will close Monday, December 14th at 11:59pm EST. All registered attendees will receive a personalized BigMarker link the day before the Holiday Open House takes place.** To register, go to GFWC.org and login to the member portal. If you have not set up your member portal, you can do so by following the easy instructions.

Fundraising has been a challenge for all clubs as normal events have been cancelled or curtailed, but novel new ideas have surfaced. Women's Club of Milton created a pop-up store and will also have items for sale on Saturday, December 12 at the Milton Holly Festival. The VIA of Rehoboth Beach is the place to go to purchase one of their holiday baskets that would normally have been sold at their St. Nicolas Tea. See what is available at rehobothbeachvia.com. The Acorn Club of Seaford is sponsoring a nine-night cruise to New England and Canada from September 9 to 18, 2021. Arrangements can be made through Boscov's Travel in Salisbury, MD. Federation Day is tentatively scheduled for Saturday, March 6 at the Gold Room, Harrington. Please sell the chances that were distributed at the fall board meeting.

I am sure that every club has been busy collecting dues this fall. All dues should be paid to the DSFWC Treasurer, Amanda Cline before January 1. The sooner you get them in to her, the more time she will

WHAT'S NEW

Virtual Tour of GFWC

Fundraisers

DUES

Entries and Reports

Winter Board Meeting

Convention

It is time to dust out those writing skills and tally up the volunteer hours. Reports and Entries will include all activities from January 1, 2020 through December 31, 2020. Details can be found in the GFWC Manual and Dean of Programs, Jan Conant, is always glad to help if you need some guidance.

If you are not writing a narrative, please complete the statistical form as this is an important tool used to secure sponsors for GFWC activities.

All DSFWC entries and reports must be received at the winter Board Meeting on February 18, 2021.

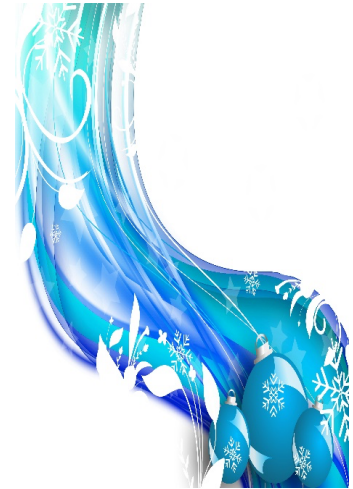
have to spend with her beautiful daughters at Christmas. If you did not get a dues notice or a form, please contact Amanda.

The statewide Convention Committee has met and reviewed the input received from the recent survey. Thanks to all who took the time to give it thought and return it. Your input was extremely helpful and we have begun the planning process for 2021. Because of the unknown status of Covid for spring, we are beginning to plan a one-day Annual Meeting that can be conducted live and in person, or virtually by Zoom if necessary. The meeting will be preceded by a fun day of excursions, meals and activity that is optional but will allow for lots of social time and fellowship. More information will be available at the winter board meeting, but at least mark your calendars for May 12 and 13, 2021.

Additional **DSFWC State Directories** have been printed. This is an essential publication for every club president as it lists contact information for all clubs, officers, chairmen. The cost is \$8. Please contact Emme Miller ASAP at 302-893-0888 to order one.

I had been quite excited that I had not heard of any of our Delaware clubwomen who had contracted Covid 19 and then I heard of Betty Baker's passing on Monday, December 7 from the virus. She was a long-standing member of the Avon Club of Felton. My sympathies go out to her family and to her clubwomen sisters.

Please stay guarded and stay well - wear your masks, keep a distance and stay home as much as possible. This is a unique holiday season, but clubwomen are nothing if not unique and flexible! Enjoy those special memories that make 2020 truly unique.



In Love and Sistership,

Rita Hollada

President, GFWC DSFWC



Committee Chairs:
Please Take Note of
Newsletter Deadline

Please submit information for the newsletter to
KathyJoCochran@comcast.net
Deadline for the January newsletter is
Monday, January 11

*The newsletter is emailed to members mid-month
and can also be found on the club website.*



FAQs: Plastic Carryout Bag Ban and At-Store Recycling Program Consumer

Q: When does the plastic carryout bag ban start?

A: The Delaware General Assembly passed this law in 2019. The ban goes into effect Jan. 1, 2021.

Q: What is the benefit of banning plastic carryout bags?

A: The change is designed to reduce beach and roadside litter, save landfill space, increase recycling efforts and help recycling facilities from having to shut down when plastic bags get stuck in the machinery. Each Delawarean uses about 434 plastic bags and that means nearly 2,400 tons of plastic bags from Delaware end up in landfills annually. A decrease by the public of plastic carryout bags can mitigate a large portion of this waste, and help our environment by reducing the amount of unsightly plastic bags on our roads and waterways that can harm us and our wildlife.

Q: Which stores are affected by the change?

A: Not all stores are affected by the change. Under the law, plastic carryout bags will no longer be available from larger stores (more than 7,000 square feet) as well as smaller stores with at least three locations in Delaware of 3,000 square feet each or more. So supermarkets and big-box stores are affected, as well as chains of convenience stores. Restaurants are not subject to the ban, nor are small stores with one or two locations.

Q: What will these stores be providing me instead?

A: It will be up to the stores, but they could choose to make available paper bags, or cloth bags, or a thicker type of plastic bag that is designed to be reusable. Or stores could decide (as they always could have previously) not to provide bags to customers at all.

Q: Does this mean my meat and fruit are loose in my bag?

A: No. Several specific bags used within grocery stores, including those used for bulk items such as fruits/vegetables as well as bags used to cover meat, can continue to be used.

Q: Why am I still receiving a plastic bag at a store during checkout if they are banned?

A: As defined by the Delaware General Assembly, a plastic carryout bag is one that is provided by a store to a customer at the point of sale made from plastic and is not specifically designed and manufactured to be reusable. There are some thicker plastic bags than the ones you are used to that are intended to be reusable and are acceptable under the new law. If you're receiving a thicker plastic film bag at a store checkout now, that bag is intended to be reusable, and you can clean/disinfect it to use again.

Q: My store replaced their plastic bags with paper bags. Are they allowed to do this?

A: Yes. This law only affects plastic carryout bags and provides guidance on how they need to be replaced with reusable bags that meet specific criteria. Paper bags were not affected by this legislation and are an acceptable alternative for plastic carryout bags. Paper bags that are no longer reusable can be recycled in your curbside recycling cart. Reuse paper bags like how you would reuse other bags.

Q: Can my store provide me a bag that has already been used?

A: No. This law calls for plastic carryout bags to be replaced with reusable bags that customers can bring back to stores to reuse. The bags made available by the retail store should be new and not reused.

Q: Will the stores need to bag my purchases differently under this law?

A: No. The new reusable bags are larger than traditional plastic carryout bags and more durable, holding heavier amounts. Customers should be able to leave the store with fewer bags holding the same number of items. Since the bags available at checkout can be used for all the items that a plastic carryout bag can be used for, there should be no impact on how store employees bag merchandise.

Q: I reuse my plastic carryout bags for other things! What am I going to do now?

A: The new reusable bags that retail stores may be providing can be used for everything your old plastic carryout bags were used for. The only potential change you'll see is the quantity of these bags on-hand, since due to their larger size, you should be taking less home. Similarly, not all retail stores are covered by this law, so there will be plastic carryout bags available from certain retailers within the state.

Q: Will my store allow me to bring in reusable cloth or plastic bags? Some stores have stopped this practice.

A: DNREC is encouraging all of the stores in Delaware to consider allowing customers to use reusable bags and follow best practices in doing so. For example, customers may bag their own items (so employees don't come in contact with the bags) and employees should sanitize the checkout area after the bags are removed as per their sanitizing policy. Based on DNREC's review of studies and practices encouraged by the Centers for Disease Control and Prevention, these steps help maximize everyone's safety while supporting reusable bags. That said, it is up to individual stores/ companies to allow reusable bags.

Q: I've heard that reusable bags can spread disease? Should I be concerned?

A: DNREC encourages all customers to turn their reusable plastic bags inside out when they get home, wipe them down with a disinfecting wipe and reuse them on future trips to the store. Several studies have shown that reusable bags, which were not cleaned or sanitized, have the potential to spread disease. However, these same studies concluded that washing bags in the laundry or disinfecting them with a cleaning wipe removed 99% of the things which could cause disease.

Q: What do I do with these bags if I can't reuse them anymore or I just want to get rid of them?

A: All the retail stores affected by this law are also required to provide an At-Store Recycling program for plastic bags and film. This drop-off location should be visible and accessible within the store. They are typically at the entrance or by the customer service area within each location. All of the bags you can't reuse anymore as well as those you don't want should be recycled at these locations. Plastic bags CANNOT go into your curbside recycling cart and should be returned to stores.

Q: My store doesn't have an At-Store Plastic Bag Recycling program? Why?

A: There may be several reasons. If the retail store is not affected by the law, they are not required to have an At-Store Recycling program. Similarly, if that retail store no longer provides plastic bags, including the exempt bags, they are not required to have a program to collect bags from consumers. If you're concerned that a retail store should be participating, please contact DNREC at 302-739-9403 or recycle@delaware.gov, and an inspection of that store will be conducted.

Q: Will stores charge me a fee for reusable bags they provide at checkout?

A: The law allows retail stores to charge a fee for the bags they make available at point of sale, but does not require it.

Q: How do I learn more and stay updated on this topic?

A: Visit de.gov/bags for more information. Follow [DNREC](#) and [Delaware Recycles](#) for the latest updates.

December 6th, 2019

Your Guide to Green Holiday Gifting



Does it seem like each holiday you can't find the living room because of the piles of gift wrap, tissue paper, and gift boxes? But how much of that makes it into the recycling bin, or worse, the landfill?"

Our seasonal gifting advice will ensure your days are merry and your holidays green.

Whether it's the holiday season or any other time of year, sustainability starts at the cart. When you're searching for that perfect gift, please consider:

- Encouraging minimal gift exchanges such as a secret Santa or white elephant gift experience.
- Reducing waste by giving an e-gift card or reloading an existing gift card.
- Gifting an experience versus a physical gift. These may include concert or event tickets, massages, spa packages, or entrance passes to parks or landmarks.
- Getting crafty and creating do-it-yourself gifts such as centerpieces, apothecary containers, etc. These can also be personalized so that the recipient is incentivized to use the gift versus tossing it.
- Select items with packaging that is recyclable.
- Shopping with your reusable shopping bag.
- Recycling boxes from online purchases as gift boxes.
- Giving rechargeable batteries (with the charging station) for toys that require batteries.
- Shopping sustainably – today, more brands than ever are using recycled materials to create their products. Look for items made with ocean plastic, reused fibers, or recycled paper.
-

Once you've made your list and checked it twice, it's time to wrap that perfect gift. Please consider:

- Purchasing wrapping paper made with recycled materials that will also be recyclable. Many cities and towns accept non-metallic/glitter wrapping paper. If your community does, toss that paper in the recycling cart after you open your gifts.
- Reusing tissue and wrapping paper. If you elect to use tissue and wrapping paper, reuse it. While it may seem cheap or tacky, why waste paper that is perfectly salvageable? If you find that reusing the paper won't work for gift wrap, consider using it for art projects (e.g. paper flowers, pressed paper on canvas) or table decorations for your holiday table.
- Wrapping gifts in gift bags. These are the gifts that keep on giving. Simply place a "Green it Forward" note inside asking the recipient to keep and reuse the gift bag. Pass the bag and note along to the next recipient.
- Giving existing materials a second life as gift wrap. These can include newspapers, magazines, and bags. Pro tip: The funny papers are terrific for children's gifts.
- Saying no to extras such as gift tags, tissue paper, and bows. Unfortunately, these items are not recyclable.
- Decorating packages with fresh greenery or holly, which you can later compost.
- Using cardboard shipping boxes as gift boxes. These can also be wrapped to use as faux gifts for added decor around your home.

The most wonderful time of the year is also the perfect time to recycle where you work, live, learn, and play. There's no time like the present to recycle more, better.

For more holiday recycling tips, tricks, and year-round recycling resources, visit recyclingpartnership.org.